



Take a Walkthrough



 3
  2
  1
  2
  183m<sup>2</sup>

# Cathedral Ceiling

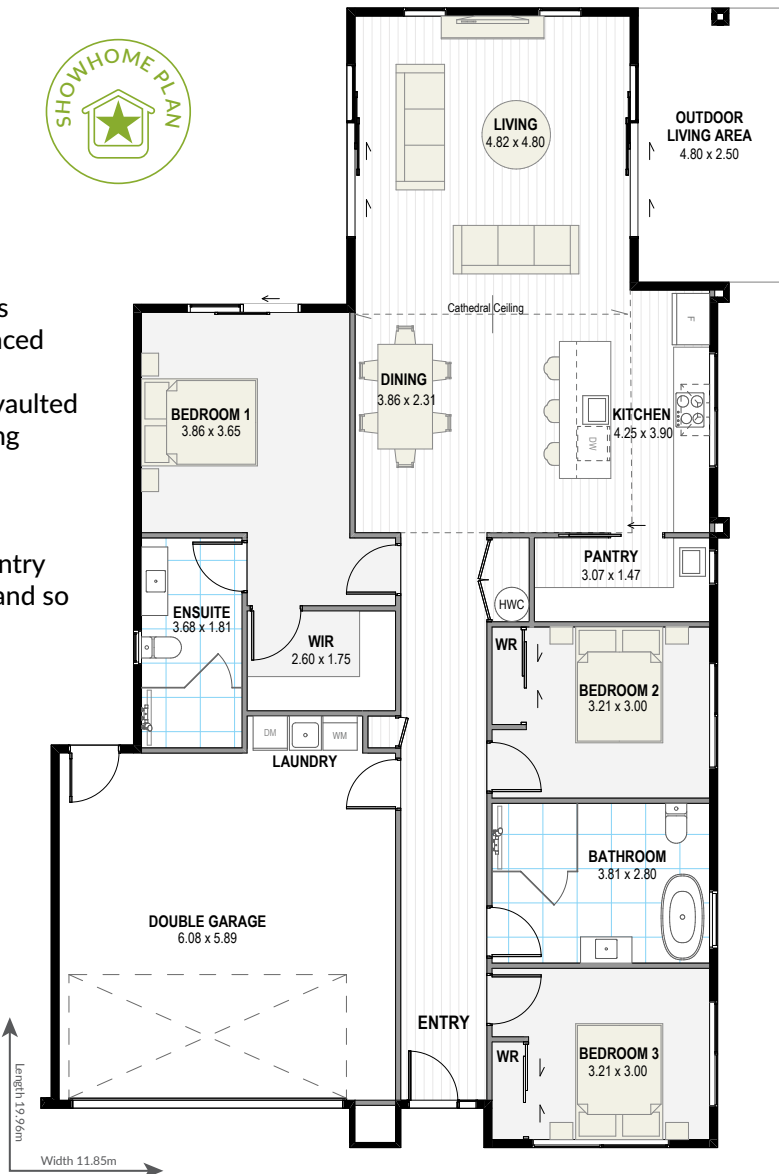
## WAIKAWA 183



The Waikawa plan features kitchen, dining and living zones embraced by a heavenly cathedral ceiling uniting two terraced areas - ideal for your mid-summer mingling. Don't let the simple and sleek exterior fool you - inside, a vaulted skylit entranceway entices the eye and leads to the sleeping areas, including a privately positioned main bedroom for extra seclusion.

Just add the convenience and functionality of a walk-in pantry and separate laundry, this home has everything you need and so much more.

*Yes! We can modify all plans to suit your preferences, budget, section size, and orientation.*



[greenhomesnz.co.nz](http://greenhomesnz.co.nz) | 0800 33 00 00



OPTIONS AVAILABLE