

Twilight 168



 3
  2.5
  1
  1
  168m²

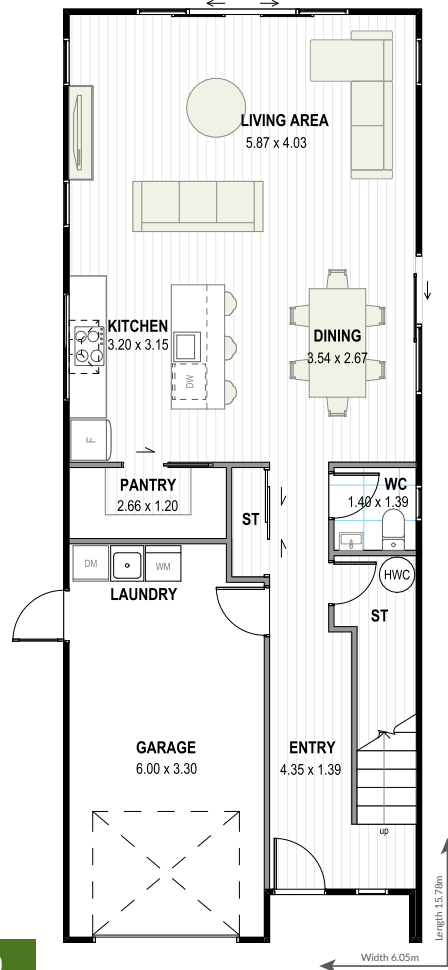
City pad

Our Twilight plan is ideal for narrow sites, and you'll love its irresistible and modern design elements, both inside and out.

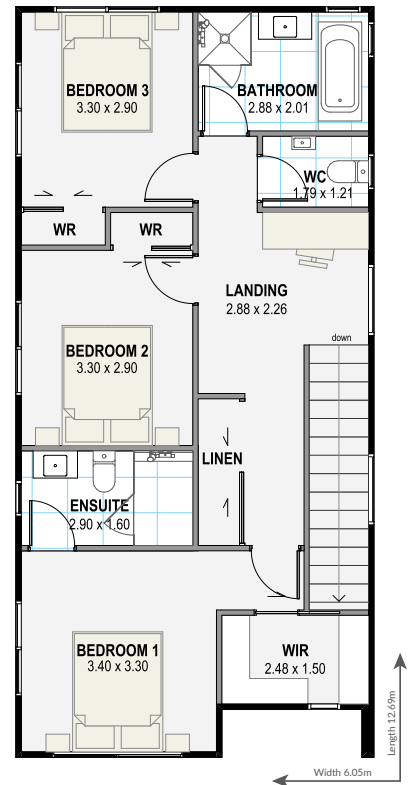
The first floor encompasses a sun filled open-plan kitchen, a dining and living area that leads onto the terrace – plus it has a convenient butler's pantry, bonus guest toilet and study.

Three upstairs bedrooms featuring a large main (with walk-in robe) will further enhance overall ambient heat as well as reduce running costs in this fabulous home.

GROUND FLOOR



FIRST FLOOR



greenhomesnz.co.nz | 0800 33 00 00



OPTIONS AVAILABLE