

# Sea Spray 190



 4  
  3  
  2  
  2  
  2  
  190m<sup>2</sup>

## Dual-Living

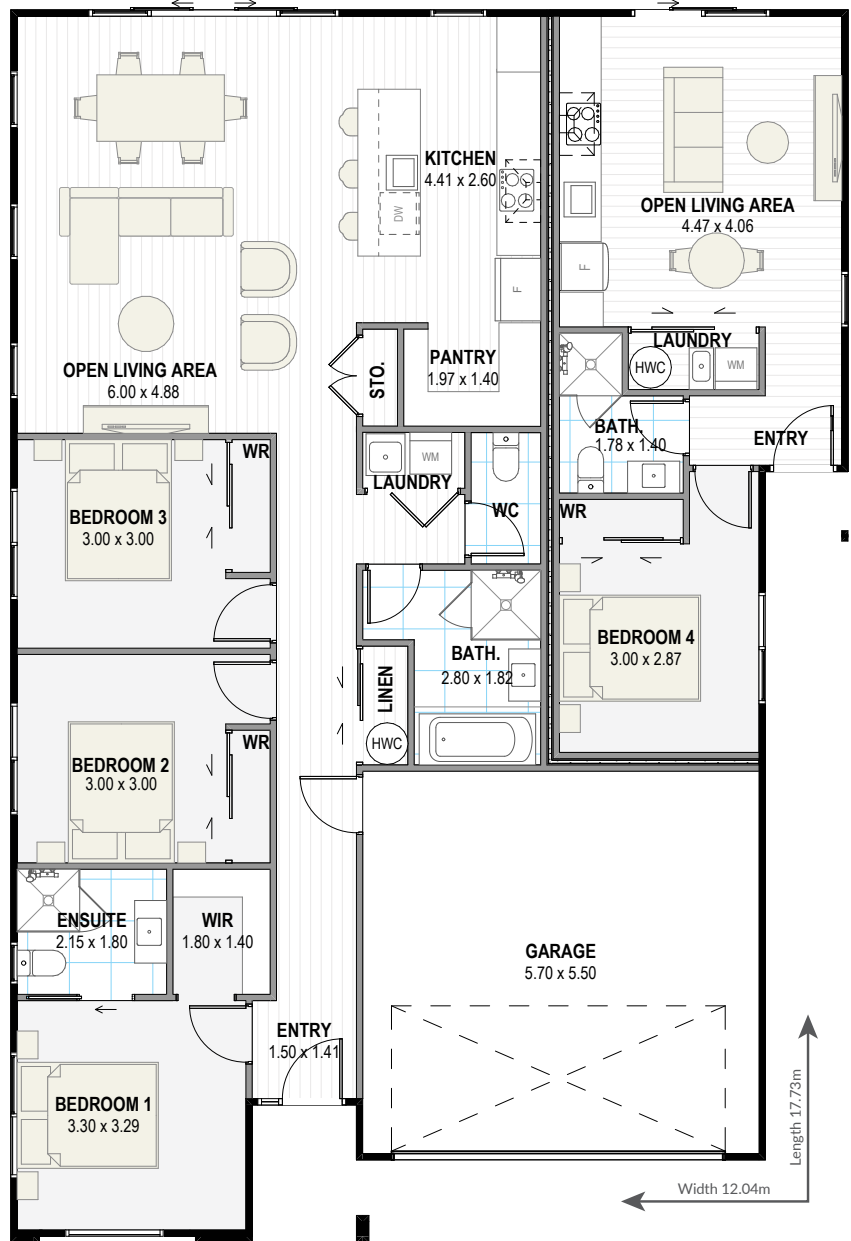
From hosting a live-in carer, to accommodating guests, the Sea Spray makes everyday life easier and more enjoyable. With private yet connected spaces, everyone has room to live, relax, and thrive.

The main three-bedroom house has a large kitchen and pantry with ample bench space servicing a nice sunny living and dining area, plus well-situated bathrooms.

The unit has a good living area and kitchen, with a tucked away serene bedroom and discrete entranceway.

The perfect supplement to your retirement income.

*Yes! We can modify all plans to suit your preferences, budget, section size, and orientation.*



[greenhomesnz.co.nz](http://greenhomesnz.co.nz) | 0800 33 00 00



OPTIONS AVAILABLE