

 3
  2
  1
  2
  165m²

Sunlit Living

PELORUS 165

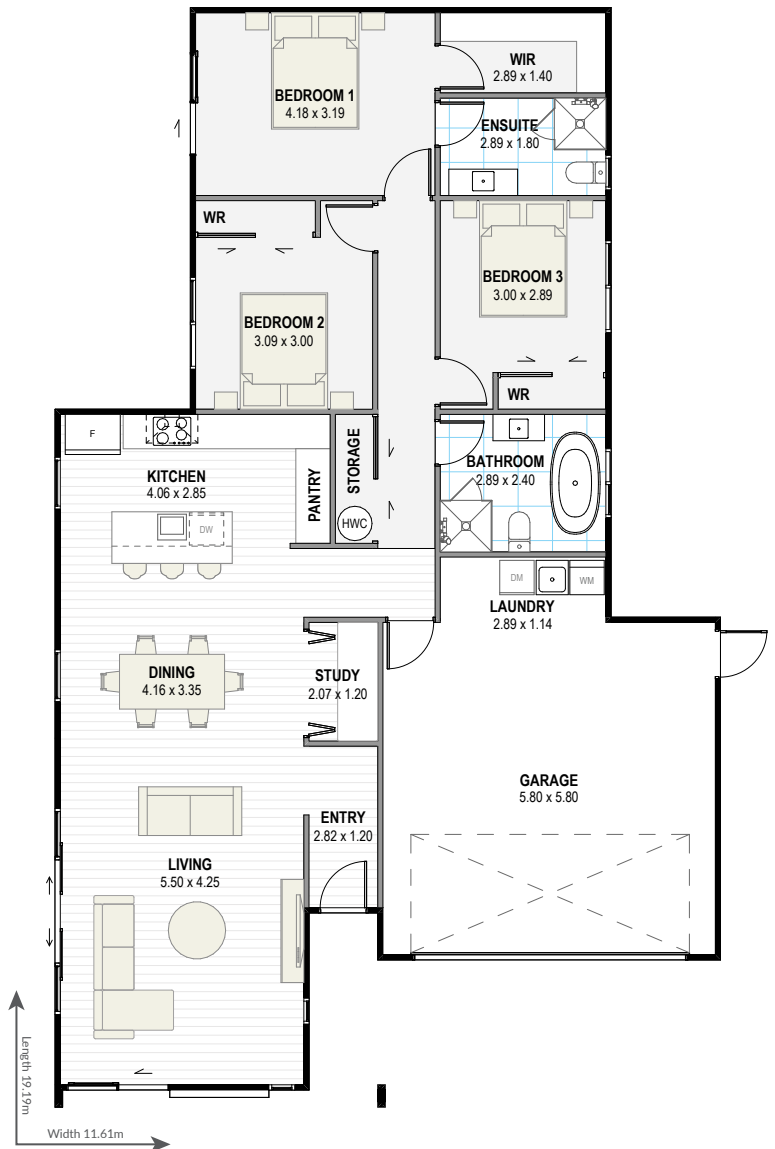
This bright and breezy three-bedroom home features superb open-plan living where you can cook up a culinary storm while watching your favourite TV show all at the same time. The dining and lounge area will harness sun rays all year-round for better overall warmth and comfort, opening out to ample decking to get your daily dose of vitamin D.

The secluded main bedroom, sizeable ensuite, and double garage are the icing on the cake with this very desirable plan.

Yes! We can modify all plans to suit your preferences, budget, section size, and orientation.



greenhomesnz.co.nz | 0800 33 00 00



OPTIONS AVAILABLE