



 3
  2
  2
  2
  232m<sup>2</sup>

# Stately & Stoic

## EGLINTON 232

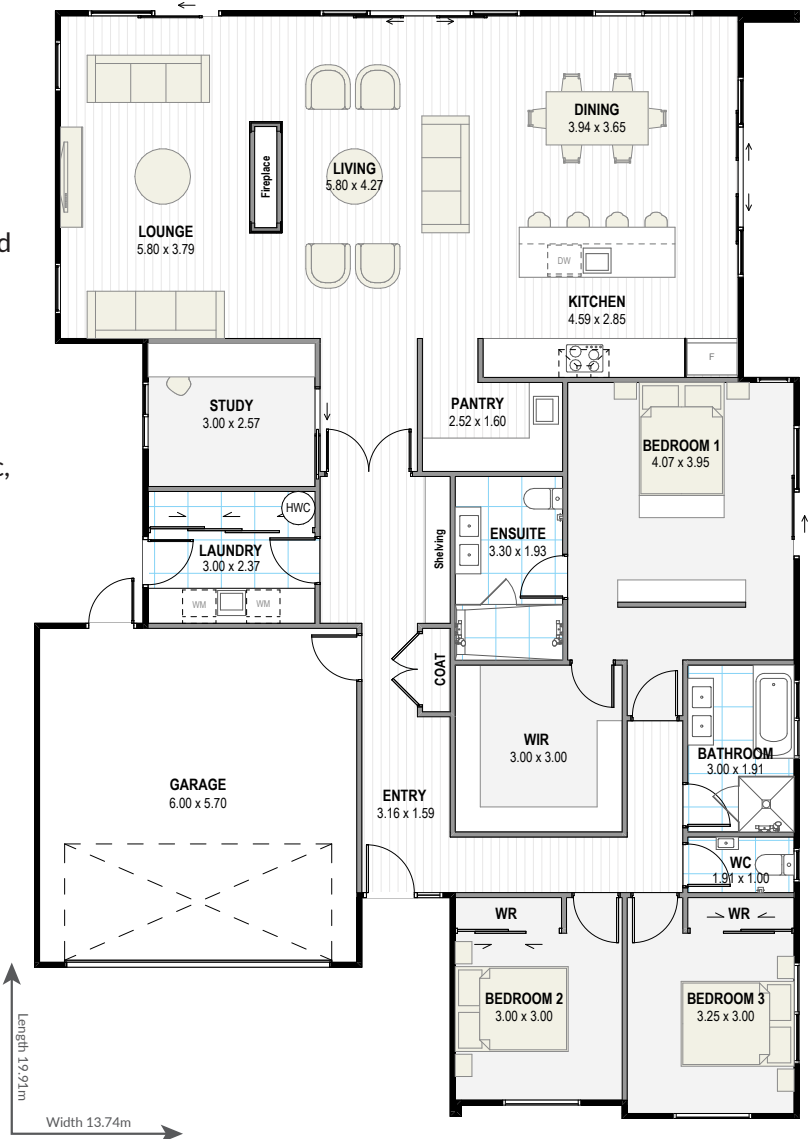
The Eglinton is a stunning and sizeable home designed to suit almost any living situation.

The key focal point is the central fireplace which divides the two living areas making it truly an entertainer's paradise. With highly desirable features such as a large butler's pantry, walk-in robe, well-placed bathrooms and study, this is a charismatic, comfortable and spacious family abode. To top it all off this home is crowned with an interesting roofline which really draws the eye, plus its inviting exterior feature wall blends it seamlessly into its surrounding environment.

*Yes! We can modify all plans to suit your preferences, budget, section size, and orientation.*



[greenhomesnz.co.nz](http://greenhomesnz.co.nz) | 0800 33 00 00



OPTIONS AVAILABLE