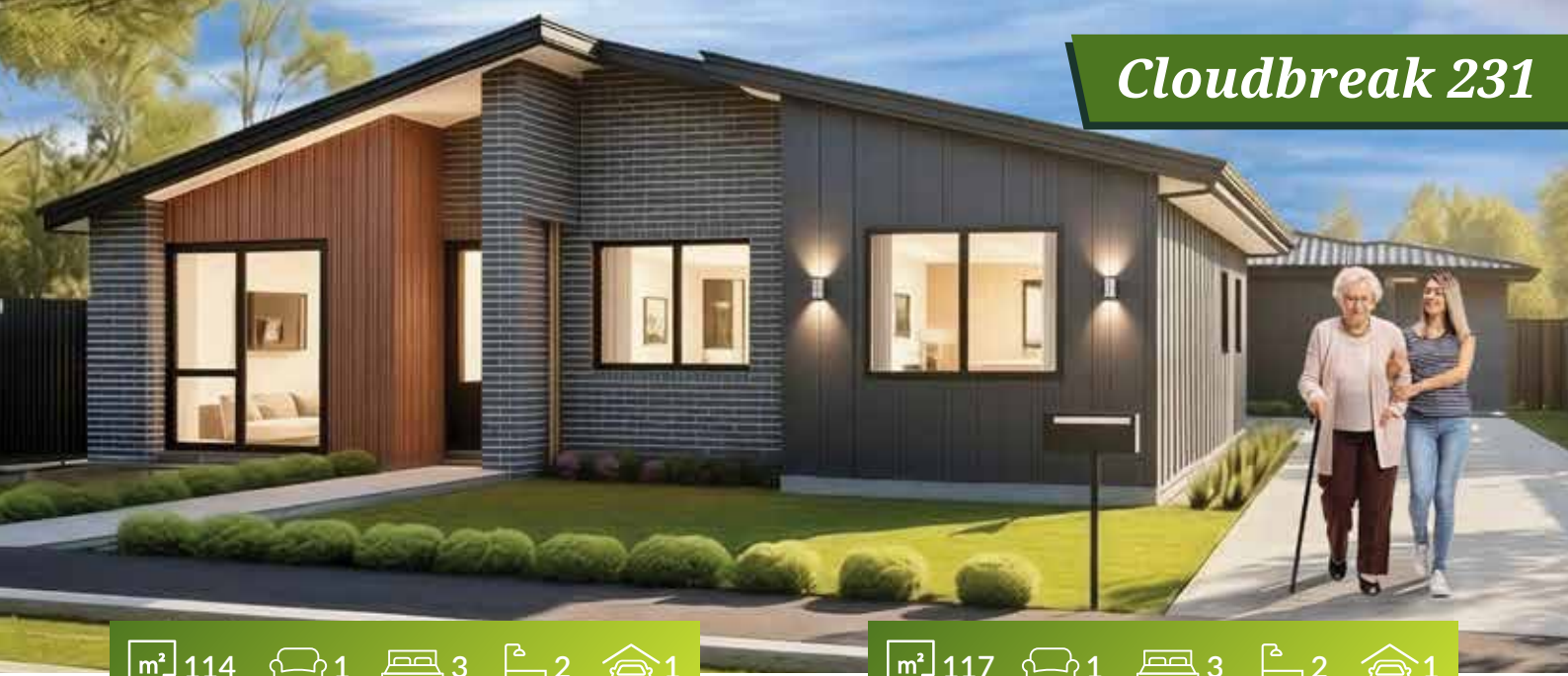


# Cloudbreak 231



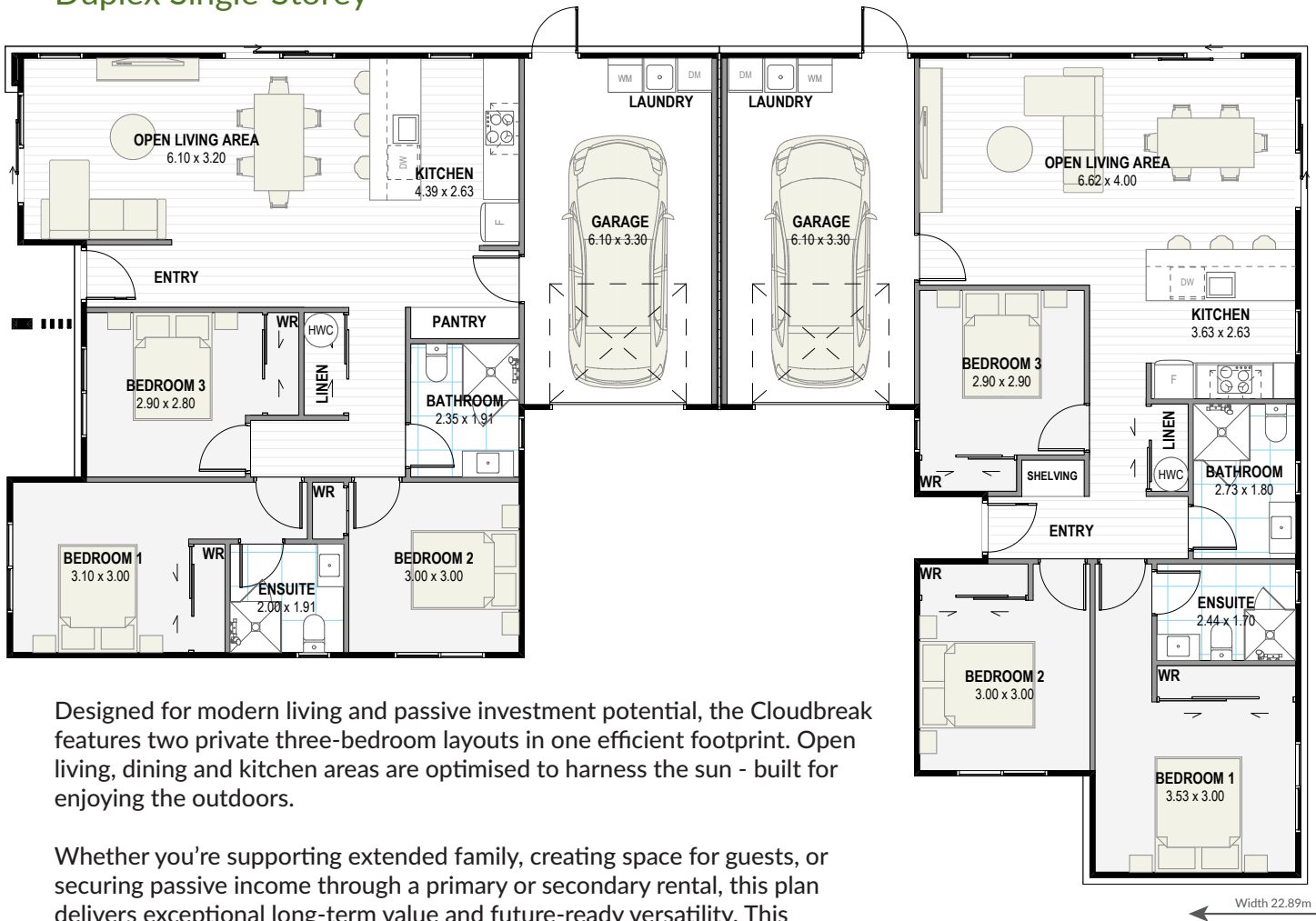
m<sup>2</sup> 114
1
3
2
1

UNIT A

m<sup>2</sup> 117
1
3
2
1

UNIT B

## Duplex Single-Storey



Designed for modern living and passive investment potential, the Cloudbreak features two private three-bedroom layouts in one efficient footprint. Open living, dining and kitchen areas are optimised to harness the sun - built for enjoying the outdoors.

Whether you're supporting extended family, creating space for guests, or securing passive income through a primary or secondary rental, this plan delivers exceptional long-term value and future-ready versatility. This combination also suits corner and rear sites.

*This layout can be easily mirrored or combined with other plan options*



Mix 'n' Match



[greenhomesnz.co.nz](http://greenhomesnz.co.nz) | 0800 33 00 00



OPTIONS AVAILABLE