

# Blue Cascade 337



m<sup>2</sup> 168
1
3
2.5
1

UNIT A

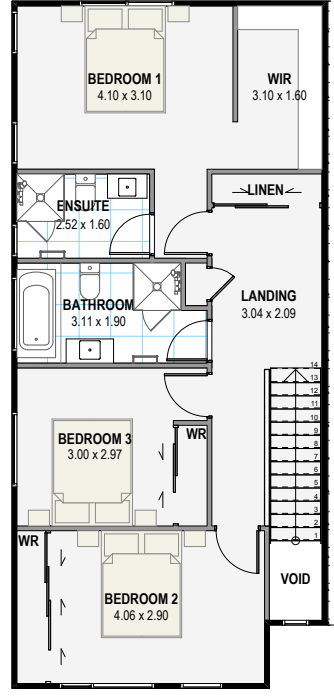
m<sup>2</sup> 168
1
3
2.5
1

UNIT B

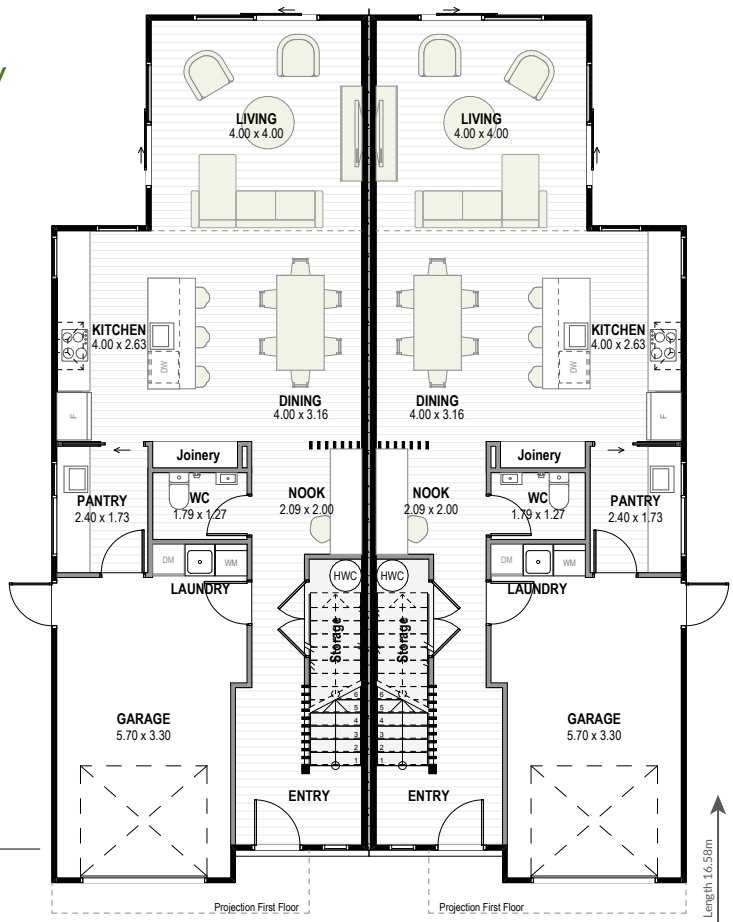
## Duplex Two-Storey

Ground Floor

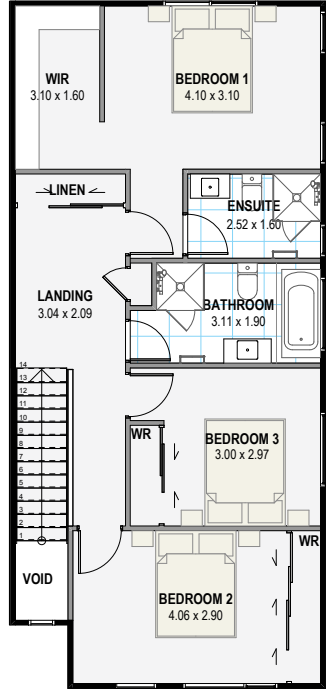
First Floor



168.65m<sup>2</sup>



First Floor



168.65m<sup>2</sup>

Length 13.04m  
Width 12.03m

Maximise the return from your land with a stylish duplex that blends practicality and modern design. The Blue Cascade features roomy kitchens and living areas, with pantries, and guest toilets on the ground floor along with secure garaging. The main bedrooms (with decent sized walk-in robes and private ensuites) are placed to the rear of the home offering extra peace and privacy.

Yes! We can modify all plans to suit your preferences, budget, section size, and orientation.



greenhomesnz.co.nz | 0800 33 00 00



OPTIONS AVAILABLE