



 6
  3
  2
  2
  280m<sup>2</sup>

## Curved feature wall

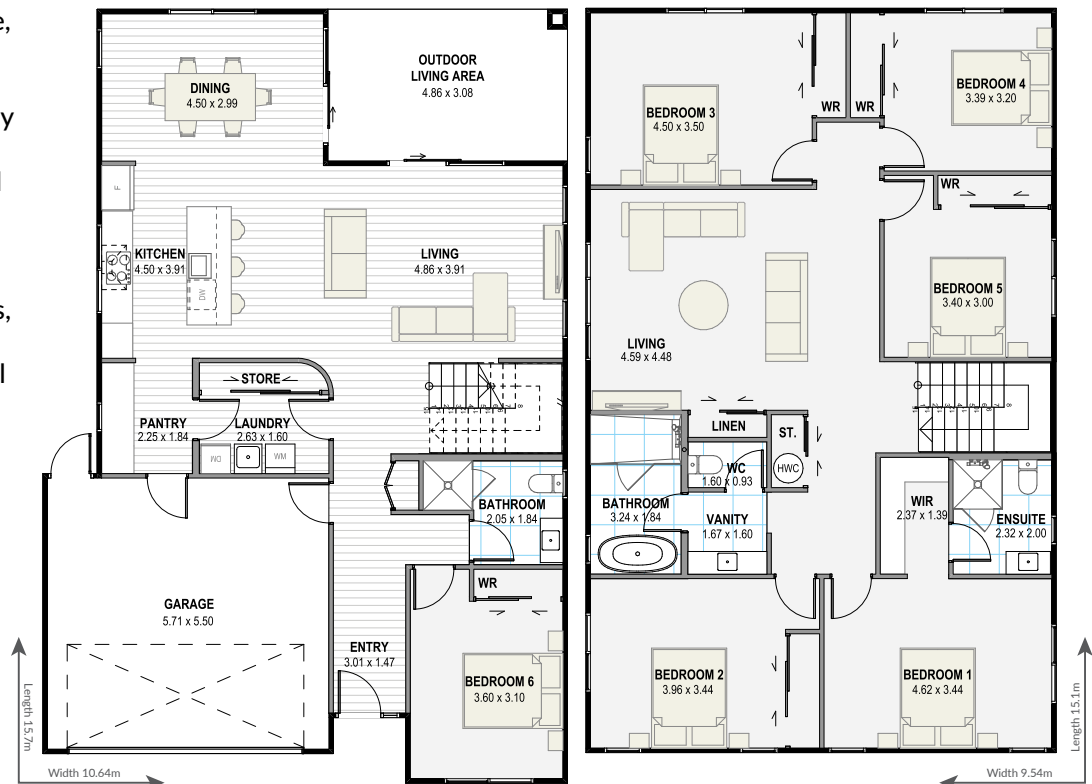
Designed for large families who adore space and style, this impressive design offers six bedrooms, three bathrooms, and flexible living throughout. The Afterglow features a generous open-plan living and a dining area that flows seamlessly to the alfresco dining space, creating the perfect setting for relaxed gatherings or lively entertaining.

A well-appointed kitchen anchors the heart of the home, complete with a discrete pantry, scullery, with laundry and storage zone tucked neatly out of sight. A striking curved feature wall adds architectural flair and gives the home its unmistakable X-factor.

With two separate living areas, plenty of room to retreat or come together, and thoughtful zoning across both levels, this home is designed to support busy family life with ease and style.

GROUND FLOOR

FIRST FLOOR



[greenhomesnz.co.nz](http://greenhomesnz.co.nz) | 0800 33 00 00



OPTIONS AVAILABLE