



3



2



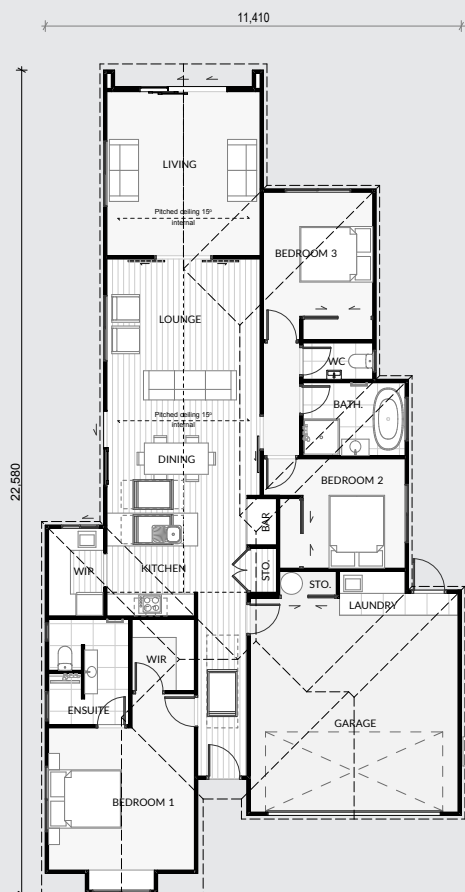
2



2



180m²



Waipara 180

8 Treedale Street, Belfast

Introducing the Waipara. You don't often come across a display home that's built to a sensible budget, that's still in reach for the average home buyer - yet flaunts style and aesthetic appeal.

Sassy, ultra-practical and family-friendly, it also includes spacious kitchen and dining areas with butler's pantry, and two living rooms.

It really boasts the key attributes most of our clients continually ask for in a home, with a smattering of x-factor too, including skylit entranceway, a striking Hardie Groove ceiling in dining and living areas, and a cute box window in the master bedroom!



Green Homes Christchurch
69 Nazareth Ave, Middleton
Christchurch

green
homes





GREEN HOMES NEW ZEALAND builds more environmentally friendly and healthier homes that are easier on the earth, the bank account and the eye! We debunk the commonly held myth that constructing in a sustainable manner is always more expensive for the average Kiwi family, in fact our energy efficient homes can save you tens of thousands off your mortgage over an average term.

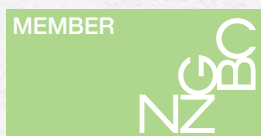
We also offer Homestar certified homes, and can incorporate Lifemark® rated universal design principles to increase safety, usability and potential return on investment. We can truly future proof your home for all ages and stages of life.

Up to **80%** of the heat from your foundation can be lost through the sides which is why as a standard spec we include perimeter-edge foundation as part of our overall insulation.

By having an energy efficient home you could save over **\$42,000** off a 30 year term mortgage (interest at 7% with a conservative estimate of saving \$70 a month).

Just widening the doorways in your home can in a small way help future proof your home for the needs of aging. This upgrade can add less than **\$100** to your overall build price!

Installing a solar system could save you on average around **\$700 a year** in energy costs and you could pay this off in around ten years with your savings.



Disclaimer: For illustrative use only. Green Homes NZ Ltd (Christchurch) has made all efforts to ensure information is accurate however we accept no responsibility for any variances that can become apparent as build commences. Please request location dependent specifications and pricing from your Green Homes Design & Build Consultant

You can save around **\$800 a year** on power costs in an energy efficient home

Universal Design standards reflect how adaptable, safe and usable a home is



Interested in this plan?
Call: 03 595 5284
Visit: greenhomesnz.co.nz

