



BUILDING BETTER HOMES. IT'S THE GHNZ WAY.

*A warm welcome to the world of Green Homes New Zealand,
where you can be assured the quality in pre-designed and custom-build,
energy efficient homes raises the bar.*

CONTENTS

WELCOME	3
WHY BUILD WITH GHNZ?	4
SPECIFICATIONS	5

Our Plans

PARAPARAUMU.....	9	ST CLAIR	41
KAITERITERI	11	SHELLY.....	43
MATAKANA	13	MOERAKI	45
MOTANAU.....	15	WAIKUKU	47
WAIHI I.....	17	ST KILDA	49
ONEROA	19	MURIWAI.....	51
WHITIANGA.....	21	PEKA PEKA	53
BTHELLS.....	23	WAIHI II	55
ORETI	25	OAKURA	57
RAGLAN.....	27	WOODEND.....	59
SUMNER	29	TAHUNANUI.....	61
MANGANUI	31	WHANGAMATA	63
WAIMARAMA	33	PIHA	65
MIRANDA	35	PAPAMOA.....	67
HAHEI.....	37	OMAHA	69
OREWA	39	MANGAWHAI	71



WELCOME



A REFRESHING, RELIABLE WAY TO BUILD AN ENERGY EFFICIENT GREEN HOME DESIGN THAT SUITS YOU PERFECTLY.

You've started the journey to building a new home, and now you're looking for that perfect design that you can call your own. Green Homes New Zealand offer customers a variety of options when it comes to the design of your home, because we want to make sure that it's perfect!

You can build one of our pre-designed energy efficient home plans, you can customise one of our existing green home designs or we can custom design your very own unique Green home because you may want something that's tailored to your lifestyle, site and budget.

Choosing GHNZ to build your new Green home is a smart move on many levels. A better quality build, more stylish design, finely-tuned cost efficiency, superior sustainability... bigger

benefits for your family all round, at no extra cost than a regular home design. What's more you're guaranteed a simple, reliable, clearly defined timeframe for your build.

We build homes that stand the test of time. From the foundation through to the finishing touches of your home, we comprise all the materials in a way that would make your children proud to own it in years to come.

All of our homes include a 10 year Masterbuilders Guarantee, and you can rest assured that Green Homes New Zealand is part of a NZ construction group that has been continuously operating under the same control since 1984, and that we are here for the long game.

We include thermal mass and passive air principles, we insulate and air seal far exceeding European standards and our own building code, this is something we are

passionate about. It is the same passion that flows throughout each project, whether it's from our design team, building managers, quantity surveyors, builders, trades and interior designers; we are all committed to ensure your home building journey will be a rewarding and enjoyable experience and your home is incomparable.

We are a home builder that welcomes the individuality you bring to our business and will ensure that is reflected in the home you allow us to build for you. Whatever stage your life's journey is at we hope to capture your heart and provide an environment that you will cherish for years to come.

We strive to build exceptional homes and whilst we are judged by our peers, we will ensure your experience and our workmanship are second to none. This way, we hope you will recommend GHNZ to your family and friends so they can become our family and friends.

“
The energy efficiency concept really works. It really does add to my resale value.”

WHY BUILD WITH GHNZ?

**THE MORE ENERGY EFFICIENT YOU ARE, THE MORE BENEFITS YOU'LL SEE.
IT'S THAT SIMPLE.**

**WITH A GREEN HOMES NEW ZEALAND PRE-DESIGNED OR CUSTOM -BUILD HOME,
BEING GREEN IS JUST THE BEGINNING.**

Because along with the environmental friendliness of GHNZ's industry leading innovation, comes a whole host of tangible, practical benefits for your family and your finances.

When it comes to building your green home, we're the only true specialist. With Green Homes New Zealand (GHNZ), the only certified Green builder in New Zealand, you can look forward to a smooth, enjoyable experience as your new home takes shape... comfortable in the knowledge there is industry-leading expertise focussed solely on ensuring unparalleled efficiency and sustainability. Put simply, we're just better... and we can prove it.

PRE-DESIGNED GREEN HOMES

Whatever you want from your Green home, there's a good chance we've already thought of it and incorporated the idea into one of our stunning pre-designs... every one of which carries our guarantees across quality of material, workmanship and service.

CUSTOM-BUILD GREEN HOMES.

If you need your home to be built in a more tailored fashion around your family or your lifestyle, there's nothing we love more than working with you to make it happen... your ideas, our expertise and official international standards in every corner. You think it, we build it.

BIGGER EFFICIENCIES MEAN LOWER ENERGY COSTS.

An energy efficient home drastically reduces your energy costs, because every outlet and appliance is fine-tuned to get the very best value from the power it uses.



With a Green Homes New Zealand pre-designed or custom-build home, being Green is just the beginning. Because along with the environmental friendliness of GHNZ's industry leading innovation, comes a whole host of tangible, practical benefits for your family and your finances.

MORE HOME COMFORT, ALL YEAR LONG.

With enhanced efficiency comes enhanced comfort and control of your home environment. Hot or cold, the happy medium is easier to maintain throughout all seasons.

A SUSTAINABLE, PRACTICAL & AFFORDABLE BUILD.

It's a common mistake to think that building your Green home will be a complicated, expensive exercise. Green Homes has been doing this a long time, we'll show you how easy it can be.

BETTER STANDARDS LEAD TO BETTER HOMES.

We are the only internationally compliant Green Builder in New Zealand. Green Homes New Zealand is the only builder in the country who is in compliance with the International Standards Organisation for design and construction of energy efficient homes (ISO 50001), with nine independent inspections on each home.

“
With enhanced
efficiency
comes enhanced
comfort and
control in
your home
environment



SPECIFICATIONS

YOUR HOME WILL BE CREATED INCORPORATING ALL YOUR WANTS AND NEEDS. WE HAVE INCLUDED BELOW OUR THOUGHTS OF TRIED AND TRUE MATERIALS. THESE WE BLEND WITH YOUR WISHES TO CREATE TOGETHER A HOME YOU AND WE CAN BE PROUD OF.

EXTERIOR AND STRUCTURE

- Insulated Concrete floor - Ductile steel meshed with fully insulated perimeter foundation.
- Wall framing with timber treatment where required by the NZ Building Code.
- Advanced framing system to NZ Building Code with insulated framing to the exterior corners of your home. Fully engineered Roof truss solution.
- Choice of approved exterior finishing materials incorporating most choices of plaster, brick or weatherboard systems. Feature finishes upon request.
- Choice of Colorsteel® roofing or tiles other materials upon request.
- Colorsteel® metal gutter and fascia system & downpipes - other materials on request.
- Doubled glazed windows. As standard. Upgrade option available such as Low E, Argon Gas or Thermally Broken to suit your needs.
- Colorsteel® sectional garage doors insulated where the insulated garage option is selected complete with automated garage door opener and 2 remote controls.
- Over code Insulation to R5 in the ceilings.
- Insulated to R2.8 in the exterior walls - 140mm framing and R3.6 batts to exterior walls option available.
- Insulation to interior walls to zone areas specific to plan.

HOME INTERIOR

- Raised door height to 2.2m high.
- Designer insulated interior doors with choice of style and lever handles - Door height raised to 2.2m high.
- 13mm Gib ceiling system on Metal Battens.
- Aqualine wet area Gib® board to all bathrooms and Laundry's.
- Square set wall corners and ceiling junctions. Softline corners and Scotia / cornice upon request.
- Wardrobe fit out and shelving included to wardrobes and cupboards.
- Heating as per plan inverter heat pump / air conditioning with fireplaces and gas appliances upon request.
- Full painting and decoration with Resene® paints including the garage.
- Floor coverings - Heavy duty wool carpets to the living areas and bedrooms.
- Tile finish to Entry, Kitchen, Laundry and wet areas.

KITCHEN AND BATHROOMS

- Designer kitchen complete with solid stone surface tops to allowance. Walk in pantry included in this sum, all plan specific.
- Twin bin recycling station under bench.
- Meile® built in multi function energy rated oven.

Simplicity, efficiency & service. The foundation of every Green Home New Zealand home.

- Meile® built in ceramic hob unit with induction or gas choices available.
- Meile® multifunction dishwasher -A17 fully installed.
- Range hood with powerful 500m3 draw ducted to the exterior.
- WELS rated designer ceramic mixer tapware throughout.
- Designer built in laundry specific as plan complete with washer plumbing.
- Ladder style heated towel rail to each bathroom.
- Fan light directly over the shower cabinets.
- Tiled shower to ground floor ensuite with glass shower screen - plan specific with slide rail shower head and mixers.
- Acrylic shower to bathroom complete with doors and slide rail shower head (plan specific) or owners choice variance.
- Fan heater to each bathroom.
- Ceramic floor tiles to bathroom floors with tile skirtings.
- European wall hung vanity unit with your choice of either polymarble or vitreous china tops and lacquer cabinets.
- Aqualine wet area Gib® board to all bathrooms and laundrys.

OTHER

- High pressure hot water system - Solar and heat pump options available.
- 3 exterior taps.
- Full sewer and storm water connections to a standard site.
- Full water, phone and fibre optic connections where available.
- LED efficient lighting throughout the home.
- Security alarm.
- Solar photovoltaic panel systems with and without battery backup available on request.
- Interior colour consultancy.
- Site specific testing such as geotechnical, percolation, or seepage tests where a requirement will be carried out as requested.
- Landscaping plans, drives and site works available.

PEACE OF MIND

- Building consent and inspection fees.
- 10 year Master Builders Guarantee.
- Builders risk contract works insurance.
- ISO 50001 construction management audits.
- Guaranteed build time.





“
*Clever design
that delivers
sublime
liveability &
cost efficiency.*

Artists impression only, there are choices of exteriors and all homes may be personalised to your site or mirror imaged.



-  3
-  2.5
-  2
-  2

180M²

PARAPARAMU

CLEVER DESIGN THAT DELIVERS SUBLIME LIVEABILITY & COST EFFICIENCY.

The Paraparamu is an innovative and clever design that delivers high levels of efficiency and ultimately comfortable living. Offering 3 large bedrooms, 2 bathrooms all upstairs. The open plan living, dining and kitchen areas, with separate laundry and additional toilet, the living room flows to an outdoor terrace.

Paraparamu is another great example of urban living that optimises space and is perfect for narrow or higher density sites. Paraparamu is a fantastic home for anyone looking to enjoy life while reducing their energy bill costs.

GROUND LIVING	PORCH	GARAGE	TERRACE	FIRST FLOOR
65.95M ²	2.53M ²	35.24M ²	9.30M ²	67.95M ²



“

*Practical
family living
with a smart
use of space.*

Artists impression only, there are choices of exteriors and all homes may be personalised to your site or mirror imaged.



-  4
 -  2
 -  1
 -  2
- 180M²**

KAITERITERI

PRACTICAL FAMILY LIVING WITH A SMART USE OF SPACE.

The perfect home for a tighter site, or for anyone looking to maximise space, this home offers the perfect balance between open plan living and private bedroom areas. Featuring an impressive open plan living area at the front of the home enjoy watching television in the lounge and living areas, whilst interacting with family in the gourmet kitchen and dining areas. As you move throughout the home, you'll find a study nook and four bedrooms including a beautiful master bedroom.

This home also offers an outdoor alfresco that is positioned to enjoy and bask in natural sunlight throughout the year. Kaiteriteri is an architectural design for the modern New Zealand family looking to reduce their running costs.

LIVING	PORCH	GARAGE	ALFRESCO
129.6M ²	4M ²	36.4M ²	10.3M ²



“

*A home design
that delivers
everything you
need and more.*

Artists impression only, there are choices of exteriors and all homes may be personalised to your site or mirror imaged.



-  4
-  2
-  1
-  2

192M²

MATAKANA

A HOME DESIGN THAT DELIVERS EVERYTHING YOU NEED AND MORE.

Matakana provides everything you would need to suit your lifestyle on a clever and minimal footprint. Sitting at only 192 square metres, this design offers four bedrooms, including the most amazing walk in robe and ensuite you would find in a home of such a size. You'll also be able to enjoy the theatre room, gourmet kitchen, walk in pantry, private study nook, and open plan living/dining with a relaxing outdoor alfresco area leading off into the yard. This great design provides impressive separation between the bedrooms and main living areas allowing you privacy when needed.

This home is suited to sites where space is a premium and has modern living covered. The modular layout of this design provides superior energy efficiency guaranteeing you savings on your energy costs.

LIVING	PORCH	GARAGE	ALFRESCO
140M ²	6.4M ²	37M ²	8.8M ²



“

*A smart
combination
of efficiency &
urban lifestyle.*

Artists impression only, there are choices of exteriors and all homes may be personalised to your site or mirror imaged.



-  3
-  2.5
-  2
-  2
- 195M²**

MOTANAU

A SMART COMBINATION OF EFFICIENCY & URBAN LIFESTYLE.

Motanau cleverly optimises the use of space and energy efficiency principles to make this home a pleasure to live in, personally and financially. Providing 3 generously sized bedrooms, 2.5 bathrooms, open plan living areas as well as a media room and outdoor terrace, Motanau offers a sophisticated urban lifestyle that will be comfortable for owners to enjoy all year round.

This home is available in different styles and facades and can be customised to suit your lifestyle.

LIVING	PORCH	GARAGE	TERRACE	FIRST FLOOR
77.8M ²	2.53M ²	35.54M ²	9.38M ²	70.67M ²



“

Watch your energy costs decrease in this sustainable home.

Artists impression only, there are choices of exteriors and all homes may be personalised to your site or mirror imaged.



4

2

1

2

201M²

WAIHI I

WATCH YOUR ENERGY COSTS DECREASE IN THIS SUSTAINABLE HOME.

Waihi I is the smaller floor plan in the Waihi Range. It is the perfect four bedroom home for anyone looking to maximise living on a reasonable footprint.

This is a clever design that offers luxurious living for its occupants. Featuring a master bedroom suite with an ensuite and walk-in-robe for any one to envy, you'll even enjoy your own private sun area to allow natural light to come into the home.

This home also offers 3 additional bedrooms, expansive kitchen, living and dining areas.

LIVING
159M²

PORCH
5M²

GARAGE
37M²



“

*Open plan &
outdoor living on
a much smaller
footprint.*

Artists impression only, there are choices of exteriors and all homes may be personalised to your site or mirror imaged.



-  3
-  2
-  1
-  2

206M²

ONEROA

OPEN PLAN & OUTDOOR LIVING ON A MUCH SMALLER FOOTPRINT.

A home that takes outdoor living inside with an innovative pod design. Oneroa combines the best of 21st century modern living with a clever use of design for functional space, enabling fulfilling family life on a much smaller foot print.

This home has core elements that make it highly functional and contemporary, including the feature long sunny entrance way, multiple outdoor living spaces and open plan areas.

Another element is the privacy given with a bedroom wing at the rear of the home, offering a definitive acoustic separation from the often noisy living areas.

LIVING	PORCH	GARAGE	DECK
150.44M ²	5M ²	36.54M ²	14.16M ²



“

*Contemporary,
luxurious
lifestyle without
the sky high cost.*

Artists impression only, there are choices of exteriors and all homes may be personalised to your site or mirror imaged.



-  3
 -  2
 -  1
 -  2
- 207M²

WHITIANGA

CONTEMPORARY, LUXURIOUS LIFESTYLE WITHOUT THE SKY HIGH COST.

Designed to create spaces around the home you simply do not find in a standard design, Whitanga offers a modern lifestyle without the expensive price tag. This home is perfect for a family looking for open plan living and room to enjoy what the outdoors has to offer. With a focus on creating large and open central living spaces, this home offers a huge living area, dining and kitchen areas and a study nook. Further expanding living space, Whitanga features a large outdoor terrace leading out from the indoor living spaces, making it the perfect home to enjoy all year round.

With energy efficiency in mind, Whitanga has been designed incorporating passive design principles like solar access, cross-flow ventilation and zoning.

LIVING	GARAGE	TERRACE
150M ²	37M ²	20M ²



“

*Clever use of
space brings
sunshine & huge
cost savings.*

Artists impression only, there are choices of exteriors and all homes may be personalised to your site or mirror imaged.



-  4
-  2
-  1
-  2

208M²

BETHELLS

CLEVER USE OF SPACE BRINGS SUNSHINE & HUGE COST SAVINGS.

Clever design ensures Bethells makes effective use of space, offering 4 comfortably sized rooms with large sunny living areas incorporating a media or formal lounge and study nook.

An energy efficient home with value in every corner, Bethells incorporates the fundamentals of effective green building design, yet is built entirely with regular materials for a regular cost.

LIVING	PORCH	GARAGE
169.63M ²	3.12M ²	35.72M ²



“

*Live the lifestyle
you've always
wanted in
this energy
efficient home.*

Artists impression only, there are choices of exteriors and all homes may be personalised to your site or mirror imaged.



 4
 2
 1
 2
213M²

ORETI

LIVE THE LIFESTYLE YOU'VE ALWAYS WANTED IN THIS ENERGY EFFICIENT HOME.

Oreti design has been architecturally crafted for a more compact site. Designed with the owner in mind, this home provides the perfect balance of family living and private retreats for everyone to enjoy.

Featuring an expansive open plan living, gourmet kitchen and dining area, study nook, and private outdoor alfresco.

You will love coming home to this beautiful home as it provides all the modern conveniences and a relaxing sophisticated feel. Enjoy living in your energy efficient home for many years to come.

LIVING	PORCH	GARAGE	ALFRESCO
154M ²	9M ²	36M ²	14M ²



“

*Enjoy relaxed
energy efficient
living, without
lifting a finger.*

Artists impression only, there are choices of exteriors and all homes may be personalised to your site or mirror imaged.



-  4
-  2
-  1
-  2

214M²

RAGLAN

ENJOY RELAXED ENERGY EFFICIENT LIVING, WITHOUT LIFTING A FINGER.

Looking for a home that caters for everyday living and will lower energy costs? The Raglan home design is the home for you. This versatile home has been designed to cater for smaller urban sites or it could be for anyone looking to build a four bedroom home on an efficient budget. The Raglan offers a spacious open plan living, dining and kitchen area, as well as four generously sized bedrooms, including the separated master bedroom which features an ensuite and walk in robe. The special feature of this home is the open plan living areas lead onto a private outdoor alfresco perfect for opening up for family bbq's, or even just a warm summer's evening to let the natural breeze through the home.

Benefiting from solar passive design and specialised energy efficient construction techniques, we'll make sure that your home uses less energy.

LIVING	PORCH	GARAGE	ALFRESCO
154M ²	7M ²	37M ²	16M ²



“

An architectural home for the modern New Zealand family.

Artists impression only, there are choices of exteriors and all homes may be personalised to your site or mirror imaged.



-  3
-  2
-  1
-  2

219M²

SUMNER

AN ARCHITECTURAL HOME FOR THE MODERN NEW ZEALAND FAMILY.

Designed with form, function, practicality and style in mind, Sumner provides an architectural home for the modern New Zealand family – at an affordable price. Upon entering Sumner you will find expansive living spaces bathed in light, leading out onto a large deck and alfresco area, making it the perfect space to enjoy all year round. The kitchen is truly the heart of this home, offering a viewpoint to all areas with a large island bench and plenty of space. The bedroom wing of Sumner flows back from the central hub of the home via a light drenched central hallway, leading to three large bedrooms with the master bedroom offering a walk in robe and ensuite.

Available in an endless variety of facades and finishes to suit any lifestyle, Sumner is a perfect plan to reduce your home energy costs without having to break the bank.

LIVING	PORCH	GARAGE	ALFRESCO	DECK
144.97M ²	2.24M ²	36.62M ²	10.42M ²	24.78M ²



“

*Cleverly
designed home
to entertain and
save money.*

Artists impression only, there are choices of exteriors and all homes may be personalised to your site or mirror imaged.



-  4
-  2
-  1
-  2

219M²

MANGANUI

CLEVERLY DESIGNED HOME TO ENTERTAIN AND SAVE MONEY.

Manganui provides a perfect balance of style and function living. This home provides solar passive design at its best and is a home suited to the urban environment while remaining budget wise.

Featuring four generously sized bedrooms, with bedroom 4 ideally suited as a home office, and master suite with walk in robe and ensuite. You'll also get to enjoy open plan living, dining and kitchen areas with gourmet kitchen and walk in pantry. This home is the perfect place to entertain your guests with a beautiful private alfresco away from the road.

Not only do you own a beautiful expansive home, you'll also take comfort in knowing that you own a truly energy efficient home. More energy efficient than any other home on your street, and still without the expensive price tag. You can be reassured, your builder will use advanced construction techniques to deliver you a home that will save you money, year after year.

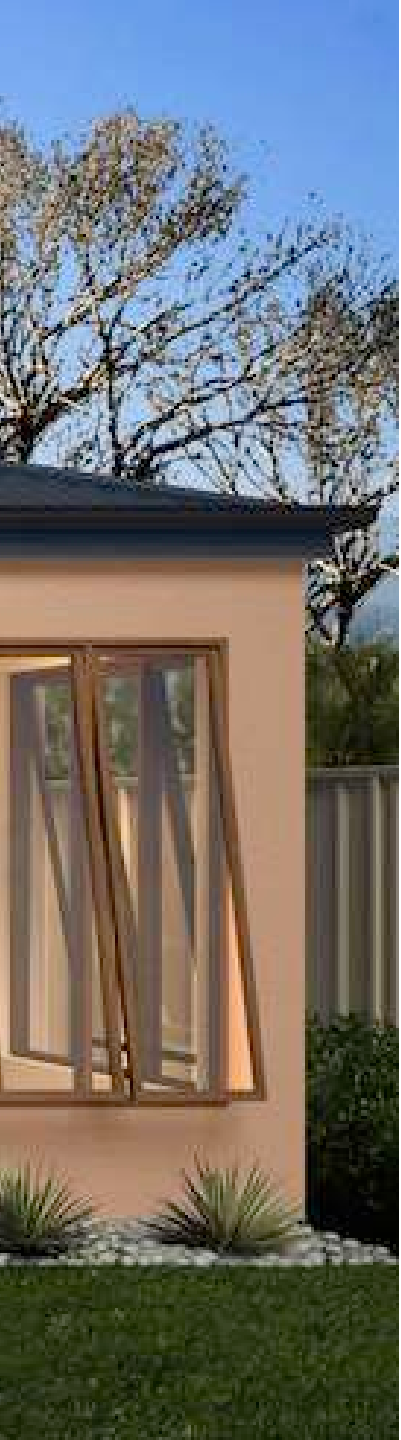
LIVING	PORCH	GARAGE	ALFRESCO
159M ²	5M ²	36M ²	19M ²



“

*Where Green
building
principles
work in perfect
harmony.*

Artists impression only, there are choices of exteriors and all homes may be personalised to your site or mirror imaged.



 4
 2
 1
 2
223M²

WAIMARAMA

WHERE GREEN BUILDING PRINCIPLES WORK IN PERFECT HARMONY.

Waimarama is the product of an innate understanding of Green building principles in design and construction. The formula required to create an affordable, truly energy efficient home is comprehensive and involves a lot more than just solar panels and led lighting.

Waimarama design embraces the deeper accredited Green building principles and applies them in perfect harmony, delivering an exceptionally efficient and affordable home.

With 4 generously proportioned bedrooms, 2 bathrooms, a double garage and ample multi living areas to take advantage of those sunny days in the cooler months, this place is a pleasure to be in.

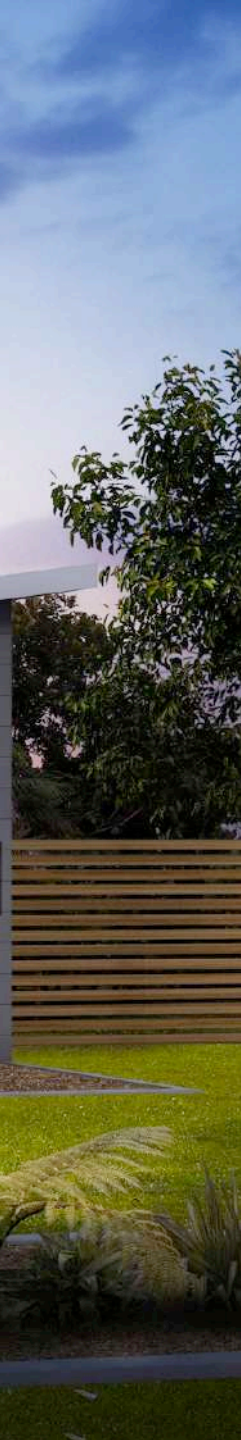
LIVING	PORCH	GARAGE	ALFRESCO
175.90M ²	3.60M ²	33.27M ²	11.04M ²



“

*Miranda is
a very good
place to live a
sophisticated,
affordable life.*

Artists impression only, there are choices of exteriors and all homes may be personalised to your site or mirror imaged.



 3
 1
 1
 2
 224M²

MIRANDA

MIRANDA IS A VERY GOOD PLACE TO LIVE A SOPHISTICATED, AFFORDABLE LIFE.

Miranda incorporates family living into this home as a key feature. This design is a practical solution for something that cleverly maximises space, providing well-balanced solution for now and forever.

This design offers spacious living including 3 bedrooms, dining and kitchen areas that lead directly onto an outdoor courtyard.

Live a sophisticated and affordable lifestyle, drastically reducing your energy costs while you do so. Miranda is available various facades and can be built in any location.

LIVING	PORCH	GARAGE	COURTYARD
156.85M ²	2.57M ²	36.54M ²	28.69M ²



“

Two separate wings provide perfect lifestyle balance.

Artists impression only, there are choices of exteriors and all homes may be personalised to your site or mirror imaged.



-  3
-  2
-  1
-  2

225M²

HAHEI

TWO SEPARATE WINGS PROVIDE PERFECT LIFESTYLE BALANCE.

Hahei will surprise you with room to move. This home has been carefully designed with functionality and optimal use of space to make it feel a lot bigger than its footprint, both indoors and outdoors. This design provides the perfect balance for privacy and entertaining with two separate wings, the bedrooms on one side of the home and the entertainer's dream on the other, with open plan living and dining areas which run directly onto an outdoor terrace.

Featuring 3 large bedrooms, indoor and outdoor living areas and a beautifully large kitchen, which encapsulates the heart of this wonderfully expansive home. We offer a selection of facades to choose from, to suit your lifestyle, Hahei is so versatile it can be built in any location.

LIVING	PORCH	GARAGE	TERRACE
143.10M ²	1.98M ²	39.08M ²	40.99M ²



“

From pagola to solar passive design, Orewa has it all.

Artists impression only, there are choices of exteriors and all homes may be personalised to your site or mirror imaged.



-  3
-  2
-  2
-  2

235M²

OREWA

FROM PAGOLA TO SOLAR PASSIVE DESIGN, OREWA HAS IT ALL.

Orewa is a double storey design that delivers innovative and diverse spaces to meet the needs of any family. This design has been well thought out to create correctly zoned areas and provide living spaces to capture the natural benefits of solar passive design.

The lower level of Orewa provides expansive lifestyle options, incorporating large living, dining and kitchen areas. The main living hub of the home harnesses the natural northern light to connect the indoors to the outdoors, which offers an intimate pergola and deck.

The upper level offers privacy, with three large bedrooms, a study nook, and a sizable master bedroom with walk in wardrobe, ensuite and retreat space.

LIVING	PORCH	GARAGE	DECK	FIRST FLOOR
80.31M ²	6.72M ²	36.54M ²	34.56M ²	76.88M ²



“

*Great things
come in well
thought out
packages*

Artists impression only, there are choices of exteriors and all homes may be personalised to your site or mirror imaged.



-  4
 -  2
 -  1
 -  2
- 242M²

ST CLAIR

GREAT THINGS COME IN WELL THOUGHT OUT PACKAGES

One of the keys to creating an energy efficient home is ensuring that the home size is only as big as the family needs it to be. To this end the St Clair is an innovative and clever design which maximises space on a very efficient footprint.

Even though it only covers 225 square metres, St Clair provides 4 large bedrooms, study, a media room, open plan kitchen, living and dining space, alfresco and deck areas, as well as two bathrooms and a double garage.

Tranquillity and efficiency beautifully combined.

LIVING	PORCH	GARAGE	ALFRESCO	DECK
172.8M ²	7.22M ²	38.3M ²	17.10M ²	6.76M ²



“

For enhanced efficiency & a relaxed, stylish lifestyle; choose Shelly.

Artists impression only, there are choices of exteriors and all homes may be personalised to your site or mirror imaged.



-  3
-  2
-  1
-  2

243M²

SHELLY

**FOR ENHANCED EFFICIENCY & A
RELAXED, STYLISH LIFESTYLE...
CHOOSE SHELLY.**

Shelly offers a diversity of indoor and outdoor living areas that maximise the available space of the home, without an overly large footprint. This home has been designed to create a sense of tranquillity and peaceful space, through a comprehensive understanding of passive design principles.

Enjoy a very relaxed lifestyle with a variety of entertaining areas, including a large kitchen, spacious alfresco area and terrace, and an area for a private water garden room.

Complete with 3 bedrooms including a private master suite, home theatre or separate living, study room or could be 4th bedroom and your choice of contemporary and classical facades, Shelly offers truly desirable design features.

LIVING	PORCH	GARAGE	ALFRESCO	TERRACE
176.56M ²	4M ²	36.54M ²	12M ²	14M ²



“

*The perfect
balance of style
and energy
efficiency.*

Artists impression only, there are choices of exteriors and all homes may be personalised to your site or mirror imaged.



-  4
-  2
-  1
-  2

246M²

MOERAKI

THE PERFECT BALANCE OF STYLE AND ENERGY EFFICIENCY.

Family-friendly and useful spaces is at the core of the Moeraki design. This home allows moments to be shared with family and friends or simply enjoyed alone. Featuring a lounge area, large open plan living and dining, gourmet kitchen with walk in pantry, spacious laundry, study nook and a private alfresco, there is an abundance of space for everyone to enjoy.

The living quarters contain a Master Suite with a luxurious wardrobe, large bedrooms throughout and well zoned areas to provide optimal energy efficiency and passive design.

LIVING	PORCH	GARAGE	ALFRESCO
190M ²	3M ²	37M ²	16M ²



“

Waikuku is a truly delightful way to live.

Artists impression only, there are choices of exteriors and all homes may be personalised to your site or mirror imaged.



 3
 2
 1
 2
249M²

WAIKUKU

WAIKUKU IS A TRULY DELIGHTFUL WAY TO LIVE.

Waikuku gives you the perfect balance between affordability and energy efficiency. With 3 large bedrooms, 2 bathrooms, large open plan living area and inviting alfresco areas, this home offers the finer aspects of home living without costing the earth. This home features a heart of the home kitchen with handy laundry layout. As with all homes built by Green Homes New Zealand, Waikuku showcases accredited green building principles in the utilisation of every natural asset to ensure an ultimately energy efficient home. Built from regular materials at regular cost, this home design effortlessly combines sustainability and value.

LIVING	PORCH	GARAGE	ALFRESCO
158.28M ²	24M ²	38.46M ²	28.31M ²



“

Enjoy lower energy costs and feel the luxury - without the expensive price tag.

Artists impression only, there are choices of exteriors and all homes may be personalised to your site or mirror imaged.



 4

 2

 1

 2

250M²

ST KILDA

ENJOY LOWER ENERGY COSTS
AND FEEL THE LUXURY - WITHOUT
THE EXPENSIVE PRICE TAG.

St Kilda home design is the perfect home that will save you money on your energy costs. It offers an expansive open plan dining, living and kitchen area, double garage home theatre or separate lounge, study nook, huge butler's pantry and outdoor alfresco, making this home the entertainers dream but also an abundance of smart living features.

This is a four bedroom design with large robes in each, including a beautifully large master bedroom suite with walk in robe and ensuite.

This home is large enough to deliver on space and maximise energy efficiency features of the home. You'll enjoy this home and your energy savings from it, for years to come.

LIVING	PORCH	GARAGE	ALFRESCO
195M ²	3M ²	37M ²	15M ²



“

*Innovative,
intriguing
design, especially
for the finer
things in life.*

Artists impression only, there are choices of exteriors and all homes may be personalised to your site or mirror imaged.

-  4
-  2
-  1
-  2

250M²



MURIWAI

INNOVATIVE, INTRIGUING DESIGN, ESPECIALLY FOR THE FINER THINGS IN LIFE.

The Muriwai design is one of our most intriguing to date. With the use of angles and pod like spaces, we've been able to design this home to make it feel bigger than its actual footprint, in a "showcase of space". The large master suite, with generous walk in and ensuite, is positioned towards the rear of the home in a private oasis, while the other 3 bedrooms are situated on a separate wing with an activity room for family or guests to enjoy.

The whole family will love the open plan living, dining and kitchen spaces, featuring a gourmet kitchen area with butler's pantry then to enjoy the outdoors, surrounding the open plan living areas is an outstanding deck.

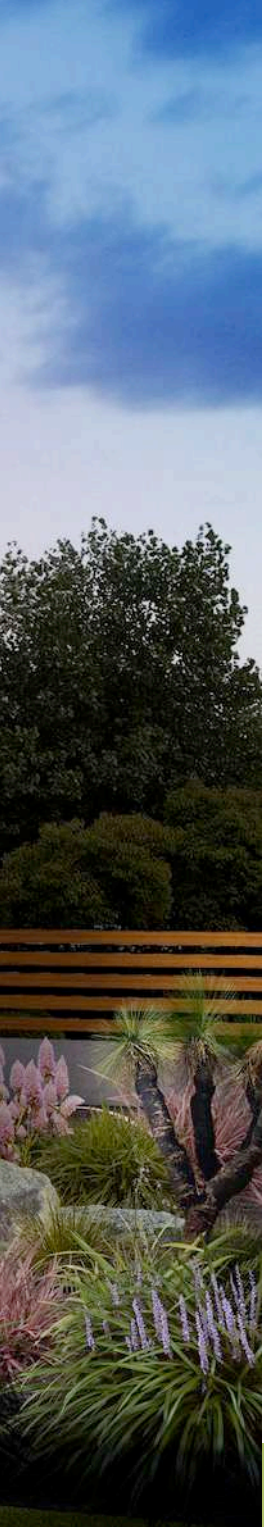
LIVING	PORCH	GARAGE	DECK
194M ²	2M ²	36M ²	17M ²



“

From its pergola to the double deck, it's energy efficient abundance.

Artists impression only, there are choices of exteriors and all homes may be personalised to your site or mirror imaged.



 3
 2
 1
 2
251M²

PEKA PEKA

FROM ITS PERGOLA TO THE DOUBLE DECK, IT'S ENERGY EFFICIENT ABUNDANCE.

Peka Peka is a great example of where smart design can create a home that delivers all the spaces you need on a much smaller footprint.

This design offers 3 bedrooms, 2 bathrooms and a powder room, gallery with study nook and a double garage with store and workshop or store area to the garage. As you journey through the design you will find that outdoor living is a key feature of this home, with two deck areas and pergola.

The central hub of the home, which includes living, dining and a large kitchen, leads directly onto these outdoor areas providing an abundance of space for all to enjoy.

LIVING	PORCH	GARAGE	DECK
168.16M ²	1.93M ²	46.26M ²	34.77M ²



“

*Energy efficient
design delivers
enjoyable
family living.*

Artists impression only, there are choices of exteriors and all homes may be personalised to your site or mirror imaged.



 4
 2
 1
 2
252M²

WAIHI II

ENERGY EFFICIENT DESIGN DELIVERS ENJOYABLE FAMILY LIVING.

Waihi II provides a practical solution to families looking for an energy efficient home. This home design offers a variety of features to make everyday living as comfortable as it can be. The Master Bedroom Suite is a beautiful feature of the design with a large walk-in-wardrobe, luxurious ensuite and it's very own private sun area for the owners to enjoy.

This home is accompanied with an additional 3 bedrooms, study nook, a huge feature butler's pantry and gourmet kitchen. Another very special feature of the home is the Theatre room with an alfresco leading off it, meaning you can use this area for entertaining or to relax and unwind at the end of the day.

LIVING	PORCH	GARAGE	ALFRESCO
195M ²	5M ²	37M ²	15M ²



“

*Customisable
decadence
to enjoy the
fun in life.*

Artists impression only, there are choices of exteriors and all homes may be personalised to your site or mirror imaged.



-  3
-  2
-  1
-  2

274M²

OAKURA

CUSTOMISABLE DECADENCE TO ENJOY THE FUN IN LIFE.

Oakura is the perfect design for a north facing site, maximising internal space and providing all you will ever want in a home. Featuring 3 bedrooms, 2 bathrooms, media room, enclosed alfresco area and large deck area to entertain, relax or bask in the sun.

The living and dining rooms offer expansive space, the kitchen features a large walk in pantry and plenty of bench top in close proximity to the handy separate laundry.

This home can easily be modified to suit your site or budget, just tell us what you want and we'll work it out.

LIVING	PORCH	GARAGE	ALFRESCO	DECK
172.14M ²	3.42M ²	36.53M ²	13.98M ²	48.41M ²



“

*A truly
harmonious
home,
harbouring
impressive
energy
efficiencies.*

Artists impression only, there are choices of exteriors and all homes may be personalised to your site or mirror imaged.



-  4
-  2
-  1
-  2

277M²

WOODEND

A TRULY HARMONIOUS HOME, HARBOURING IMPRESSIVE ENERGY EFFICIENCIES.

Woodend offers an impressive balance of expansive living areas and spacious bedrooms, coupled with innovative green design which affords maximum energy efficiency.

With 4 bedrooms, 2 bathrooms, an open plan kitchen and living area, as well as a separate media room, it's large enough to deliver on space but efficient enough to contain costs for the size of the home.

Life in Woodend is truly harmonious.

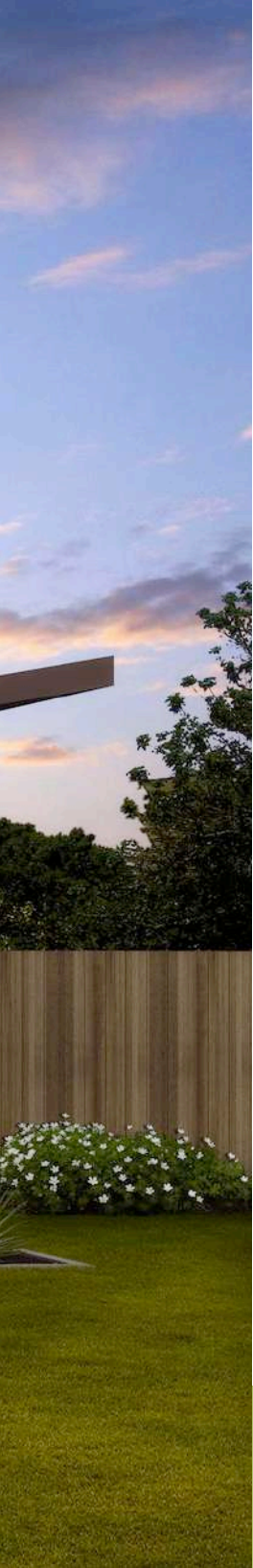
LIVING	PORCH	GARAGE	ALFRESCO
194.16M ²	11.09M ²	37.00M ²	35.42M ²



“

*All the space
you've ever
wanted, for
a price you
wouldn't dare
dream of.*

Artists impression only, there are choices of exteriors and all homes may be personalised to your site or mirror imaged.



 4
 2
 1
 2
280M²

TAHUNANUI

ALL THE SPACE YOU'VE EVER WANTED, FOR A PRICE YOU WOULDN'T DARE DREAM OF.

Tahunanui is a perfect home to provide maximised space on your home site, displaying how smart design can produce energy efficient benefits and functional living areas throughout the entire home.

The spacious master bedroom, with walk in robe and ensuite, is situated at the front of the home. Moving back into the separate laundry, large kitchen, with expansive bench spaces and walk in pantry, flowing dining and lounge, then onto your choice of two private decks or outdoor alfresco area.

At the back is a large rumpus room or may be kids zone with the remaining 3 spacious bedrooms and bathroom.

LIVING	PORCH	GARAGE	ALFRESCO	DECK
187.59M ²	2.12M ²	40.69M ²	19.54M ²	31M ²



“

From the moment you look at Whangamata, you'll love it.

Artists impression only, there are choices of exteriors and all homes may be personalised to your site or mirror imaged.



-  4
-  2
-  1
-  2

281M²

WHANGAMATA

FROM THE MOMENT YOU LOOK AT WHANGAMATA, YOU'LL LOVE IT.

You'll immediately appreciate this modern design that maximises energy efficiency and space for a growing family. The home offers a diverse number of spaces, with 4 bedrooms, including a private master suite with ensuite and large walk in wardrobe. The main living spaces are situated to the rear of the home with choice of outdoor aspect, with the kitchen offering an abundant work space overlooking the living area and family.

Whangamata embraces outdoor living aspects, with a gallery and hallway letting lots of natural light into the home. Into the outdoor areas and you'll find a terrace, alfresco area and a large courtyard – truly a unique feature of the home. Whangamata offers functional, enjoyable day to day living for the entire family, available in a number of styles and finishes to suit your lifestyle.

LIVING	PORCH	GARAGE	ALFRESCO	TERRACE
204.00M ²	3.76M ²	36.54M ²	18.13M ²	18.82M ²



“
Space to spread
out, have fun &
save money.”

Artists impression only, there are choices of exteriors and all homes may be personalised to your site or mirror imaged.



-  3
-  2
-  1
-  2

297M²

PIHA

SPACE TO SPREAD OUT, HAVE FUN & SAVE MONEY.

Piha is a real entertainers home, perfect for the family that loves the outdoors all year round. The heart of this home is the central pod, which contains a large open living area, an equally large and inviting dining area, and an open plan kitchen featuring a large central bench and fully equipped butler's pantry beside the separate but handy laundry.

The bedroom zone is positioned to the rear of the home for privacy and quietness, with an activity room included to provide more room for your family to spread out and relax.

This design features 3 bedrooms, 2 bathrooms and a double car garage, with opportunity for large garden spaces. You will never want to leave.

LIVING	GARAGE	DECK
230M ²	46M ²	21M ²



“

*A delicious
diversity of living
spaces & cutting
edge energy
efficiency.*

Artists impression only, there are choices of exteriors and all homes may be personalised to your site or mirror imaged.



-  4
-  2.5
-  2
-  2

337M²

PAPAMOA

A DELICIOUS DIVERSITY OF LIVING SPACES & CUTTING EDGE ENERGY EFFICIENCY.

Papamoa is an ideal design for anyone who wants to build a great Green home for regular cost. Papamoa is a design from our double storey range and is perfect for a family that is looking to build a home which is sophisticated and energy efficient.

Ideal for some smaller and narrower sites yet this home offers a large floor footprint of 303 sqm and provides four large bedrooms, 2.5 bathrooms, a double garage, open plan living areas and 2 outdoor spaces for you to relax and entertain guests.

This design is available in a variety of styles and finishes for all tastes and budgets and can be customised to suit your lifestyle, climate, home site and budget.

LIVING	PORCH	GARAGE	DECK	FIRST FLOOR
149.71M ²	2.62M ²	42.60M ²	33.04M ²	109.04M ²



“

*If you're looking
for something
special on a
larger site.*

Artists impression only, there are choices of exteriors and all homes may be personalised to your site or mirror imaged.



-  4
-  2
-  1
-  2

338M²

OMAHA

IF YOU'RE LOOKING FOR SOMETHING SPECIAL ON A LARGER SITE.

A truly unique pavilion style home that spreads across your site, creating fantastic and inviting spaces, both inside and out. Omaha offers the best of spacious living for people looking to take advantage of larger sites or acreage, having been carefully designed to provide optimal zoned energy efficiency whilst at the same time offering a modern lifestyle with a variety of areas for retreating or entertaining – all areas naturally linked together by sunlit breezeways.

Omaha includes a central living area which connects to the alfresco area, gourmet kitchen with feature butler's pantry, master suite of space and grace with a his and hers wardrobe, 3 other large bedrooms and well zoned areas for all members of the family or guests.

LIVING	GARAGE	ALFRESCO
268.38M ²	43.81M ²	26.29M ²



“
Better quality
of life. Better
cost of living.”

Artists impression only, there are choices of exteriors and all homes may be personalised to your site or mirror imaged.



-  4
 -  2
 -  2
 -  2
- 375M²**

MANGAWHAI

**BETTER QUALITY OF LIFE.
BETTER COST OF LIVING.**

Mangawhai is a perfectly designed home for families looking for a double storey living with a design that provides space and multiple living areas. Mangawhai is one of our larger plans on offer and would also suit a narrower or smaller site even if you are looking for a larger home size.

This design offers expansive living areas and features a large main bedroom upstairs, open plan dining, kitchen, living and outdoor living areas on the upper level. The lower level features 3 generously sized bedrooms, bathroom and separate laundry with an additional living area, double garage and another great outdoor space.

Mangawhai harnesses natural solar energy during the Winter, reducing heating costs, while during the Summer the home creates a cooling element utilising the breezes.

LIVING	PORCH	GARAGE	DECK	BALCONY	FIRST FLOOR
121.77M ²	5.49M ²	44.18M ²	17.40M ²	32.11M ²	154.09M ²



**THE STEP-BY-STEP GUIDE
TO BUILDING A
GREEN HOME**

**DOWNLOAD OUR FREE
E-BOOK FROM OUR WEBSITE**

GREEN HOMES NEW ZEALAND

AUCKLAND

15b Vestey Drive,
Mount Wellington, Auckland 1010

CHRISTCHURCH

69 Nazareth Avenue,
Middleton, Christchurch, 8024

PHONE: 0800 33 00 00

info@greenhomesnz.co.nz

Monday to Friday, 8:30am and 5:00pm

greenhomesnz.co.nz

Get started today. Call 0800 33 00 00 or visit www.greenhomesnz.co.nz

Find us on Facebook  @GreenHomesNZ

